

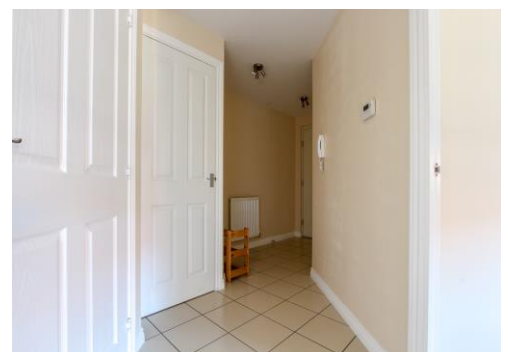
365 Residential

DOBEDE WAY

Soham



- Modern Mid Floor Apartment
- 2nd Bedroom
- Carport
- Viewings 7 Days A Week 9am-9pm
- Master With En-Suite
- Family Bathroom
- Available 17/05/2019



Dobede Way
Soham, Ely, CB7 5FN

Monthly Rental Of
£725

Purpose Built, Modern Mid Floor Apartment, 2 Good Sized Bedrooms, Ensuite to Master, French Doors opening onto Juliet Balcony, Open Plan Living White Goods Included, Allocated Parking. Available 17/05/2019. Viewings 7 Days A Week 9am-9pm.

Living/Dining Room 14' 10" x 11' 3" (4.52m x 3.43m)

Kitchen 7' 9" x 7' 5" (2.35m x 2.25m)

Master Bedroom 12' 5" x 8' 6" (3.78m x 2.58m)

En-Suite

Bedroom 2 12' 5" x 5' 10" (3.79m x 1.79m)

Family Bathroom 6' 9" x 6' 6" (2.07m x 1.97m)

